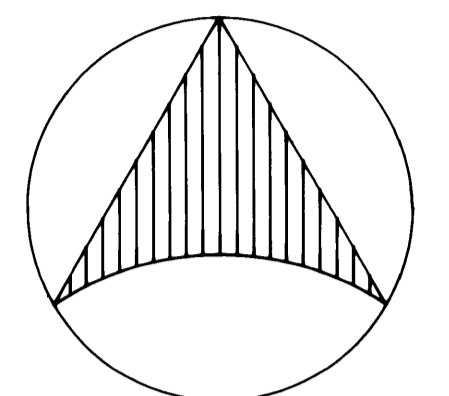


# THE PLANTATION at SEWALL'S POINT

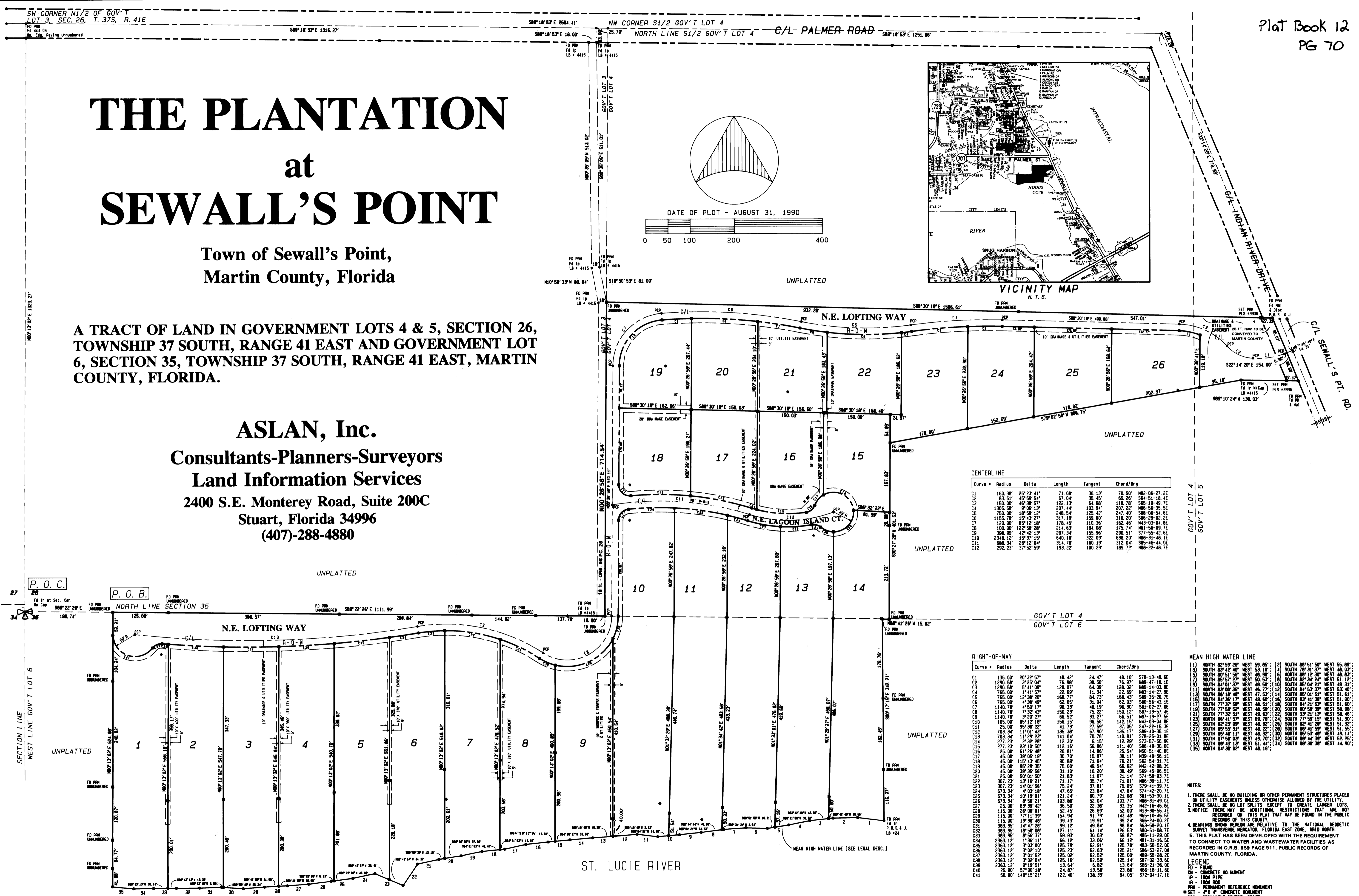
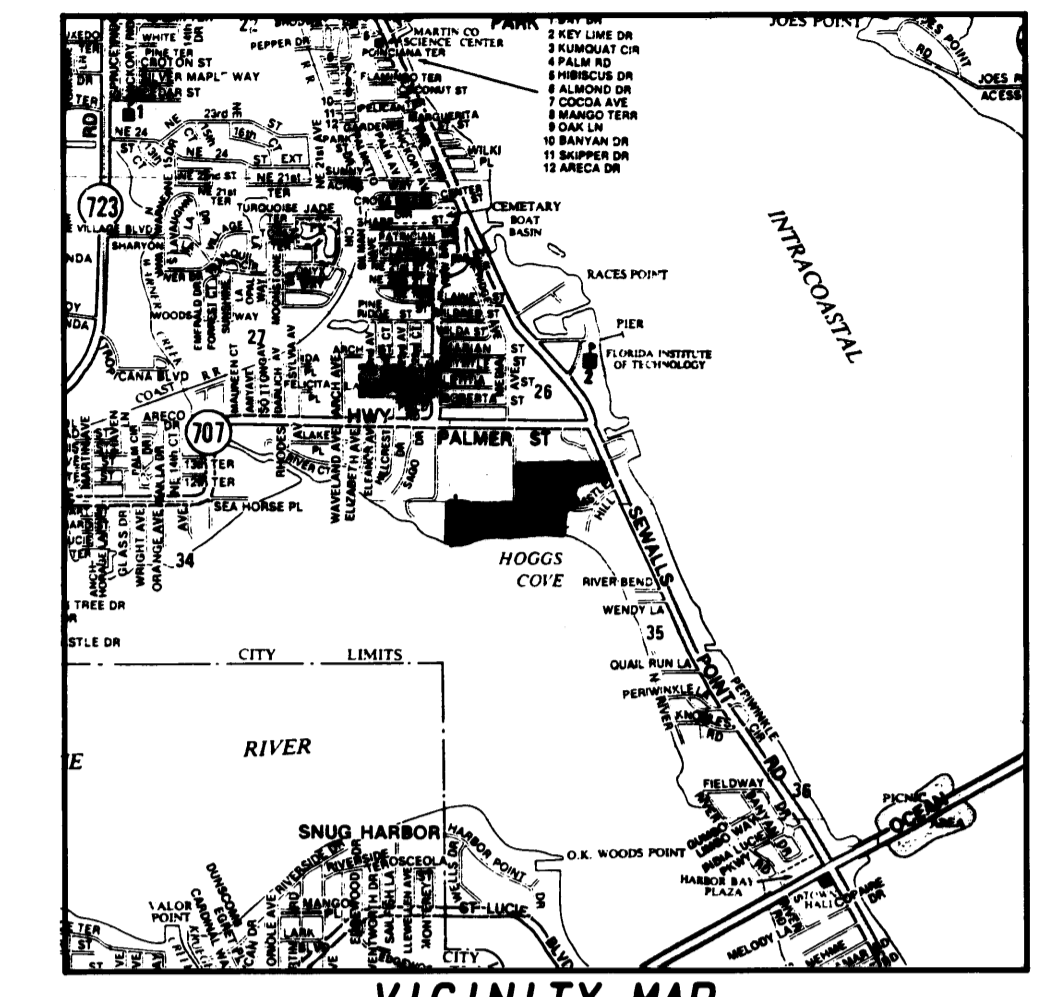
Town of Sewall's Point,  
Martin County, Florida

A TRACT OF LAND IN GOVERNMENT LOTS 4 & 5, SECTION 26,  
TOWNSHIP 37 SOUTH, RANGE 41 EAST AND GOVERNMENT LOT  
6, SECTION 35, TOWNSHIP 37 SOUTH, RANGE 41 EAST, MARTIN  
COUNTY, FLORIDA.

**ASLAN, Inc.**  
Consultants-Planners-Surveyors  
Land Information Services  
2400 S.E. Monterey Road, Suite 200C  
Stuart, Florida 34996  
(407)-288-4880



DATE OF PLOT - AUGUST 31, 1990



CENTERLINE

Curve	Radius	Delta	Length	Tangent	Chord/Brs
C1	160.36'	25°23'41"	71.08'	36.13'	70.50'
C2	83.51'	45°55'54"	67.04'	35.45'	65.26'
C3	150.00'	45°55'54"	122.13'	64.66'	118.78'
C4	1305.96'	9°06'13"	207.44'	103.94'	207.22'
C5	750.00'	18°59'12"	248.54'	125.42'	247.40'
C6	1155.78'	15°12'27"	317.15'	158.88'	315.25'
C7	120.00'	85°12'18"	176.45'	110.36'	162.46'
C8	100.00'	124°02'22"	214.63'	175.74'	215.74'
C9	398.95'	42°42'13"	297.34'	155.96'	290.51'
C10	2348.12'	15°37'15"	640.18'	322.09'	636.20'
C11	188.34'	25°04'46"	162.18'	81.78'	162.18'
C12	292.23'	37°52'59"	193.22'	100.29'	189.72'

RIGHT-OF-WAY

Curve	Radius	Delta	Length	Tangent	Chord/Brs
C1	135.00'	20°32'57"	48.42'	24.47'	48.16'
C2	1290.58'	3°25'04"	76.98'	38.50'	76.97'
C3	1290.58'	5°41'05"	128.07'	64.09'	128.05'
C4	765.00'	14°15'31"	221.89'	111.34'	221.85'
C5	765.00'	12°38'26"	168.77'	84.73'	168.43'
C6	765.00'	20°48'48"	262.05'	131.04'	261.03'
C7	1140.78'	4°50'17"	96.33'	48.19'	96.30'
C8	1140.78'	7°32'43"	150.23'	75.12'	150.13'
C9	1140.78'	39°27'27"	66.52'	33.27'	66.51'
C10	105.00'	85°12'18"	156.15'	96.56'	142.15'
C11	1140.78'	7°32'43"	150.23'	75.12'	150.13'
C12	1140.78'	39°27'27"	66.52'	33.27'	66.51'
C13	763.34'	11°01'43"	135.38'	67.90'	135.17'
C14	763.34'	11°25'23"	141.04'	70.76'	140.84'
C15	277.23'	23°10'50"	112.16'	56.15'	112.16'
C16	25.00'	61°25'48"	28.81'	14.88'	28.54'
C17	45.00'	39°05'19"	30.70'	15.97'	30.11'
C18	45.00'	115°45'45"	90.89'	75.21'	90.89'
C19	45.00'	85°29'35"	75.00'	48.54'	66.62'
C20	45.00'	39°05'19"	31.10'	16.20'	30.49'
C21	25.00'	28°58'01"	52.45'	26.69'	52.00'
C22	307.23'	14°01'58"	75.24'	37.81'	75.24'
C23	307.23'	13°16'21"	71.17'	35.74'	71.01'
C24	307.23'	14°01'58"	75.24'	37.81'	75.24'
C25	675.34'	4°03'18"	47.65'	23.84'	47.65'
C26	675.34'	10°19'01"	121.24'	60.79'	121.06'
C27	675.34'	8°58'21"	103.88'	52.04'	103.77'
C28	25.00'	83°39'42"	36.50'	22.38'	33.35'
C29	115.00'	28°58'01"	52.45'	26.69'	52.00'
C30	115.00'	77°11'39"	154.94'	91.79'	143.48'
C31	115.00'	19°36'48"	38.43'	19.91'	38.24'
C32	383.95'	14°47'29"	99.15'	49.54'	98.84'
C33	383.95'	18°58'08"	127.11'	64.14'	126.53'
C34	283.12'	3°01'10"	125.03'	62.53'	124.91'
C35	283.12'	3°01'10"	125.03'	62.53'	124.91'
C36	283.12'	3°01'10"	125.03'	62.53'	124.91'
C37	283.12'	3°01'10"	125.03'	62.53'	124.91'
C38	283.12'	3°01'10"	125.03'	62.53'	124.91'
C39	283.12'	3°01'10"	125.03'	62.53'	124.91'
C40	25.00'	47°00'18"	24.87'	13.58'	24.86'
C41	50.00'	140°15'21"	122.40'	136.37'	94.00'

MEAN HIGH WATER LINE

(1)	NORTH 02°59'26" WEST 58.85'
(2)	SOUTH 88°51'50" WEST 55.85'
(3)	SOUTH 83°42'40" WEST 53.10'
(4)	SOUTH 78°31'37" WEST 48.03'
(5)	SOUTH 00°51'50" WEST 48.00'
(6)	NORTH 08°12'30" WEST 48.83'
(7)	SOUTH 00°51'50" WEST 50.53'
(8)	SOUTH 82°34'24" WEST 51.12'
(9)	SOUTH 84°01'37" WEST 48.00'
(10)	SOUTH 85°14'27" WEST 51.86'
(11)	NORTH 83°00'36" WEST 46.77'
(12)	SOUTH 84°53'37" WEST 53.40'
(13)	SOUTH 88°18'48" WEST 47.52'
(14)	SOUTH 85°01'21" WEST 53.61'
(15)	SOUTH 84°38'17" WEST 45.85'
(16)	SOUTH 83°41'38" WEST 51.00'
(17)	SOUTH 77°37'59" WEST 48.50'
(18)	SOUTH 77°59'55" WEST 48.50'
(19)	SOUTH 00°51'50" WEST 50.53'
(20)	SOUTH 80°50'38" WEST 50.80'
(21)	SOUTH 77°37'59" WEST 48.50'
(22)	SOUTH 33°21'13" WEST 58.48'
(23)	NORTH 68°41'57" WEST 48.00'
(24)	SOUTH 77°59'55" WEST 48.50'
(25)	SOUTH 82°23'08" WEST 48.00'
(26)	SOUTH 82°41'38" WEST 51.35'
(27)	SOUTH 80°50'38" WEST 48.50'
(28)	SOUTH 80°51'31" WEST 51.55'
(29)	SOUTH 05°48'11" WEST 48.30'
(30)	NORTH 85°13'48" WEST 48.14'
(31)	SOUTH 87°50'03" WEST 49.70'
(32)	SOUTH 89°44'38" WEST 52.25'
(33)	SOUTH 08°43'19" WEST 51.44'
(34)	SOUTH 89°30'38" WEST 44.90'
(35)	NORTH 84°38'02" WEST 48.16'

NOTES:  
1. THERE SHALL BE NO BUILDING OR OTHER PERMANENT STRUCTURES PLACED ON UTILITY EASEMENTS UNLESS OTHERWISE ALLOWED BY THE UTILITY.  
2. THERE SHALL BE NO LOT SPLITS EXCEPT TO CREATE LARGER LOTS.  
3. NOTICES: THERE MAY BE ADDITIONAL RESTRICTIONS THAT ARE NOT RECORDED ON THIS PLAT THAT MAY BE FOUND IN THE PUBLIC RECORDS OF THIS COUNTY.  
4. BEARINGS SHOWN HEREON ARE RELATIVE TO THE NATIONAL GEODETIC SURVEY TRANSVERSE MERIDIAN, FLORIDA EAST ZONE, GRID NORTH.  
5. THIS PLAT HAS BEEN DEVELOPED WITH THE REQUIREMENT TO CONNECT TO WATER AND WASTEWATER FACILITIES AS RECORDED IN O.R.B. 859 PAGE 911, PUBLIC RECORDS OF MARTIN COUNTY, FLORIDA.

LEGEND  
FD - FUND  
IR - IRON ROD  
CM - CONCRETE MONUMENT  
PM - PERMANENT REFERENCE MONUMENT  
SET - 2" x 4" CONCRETE MONUMENT  
PCP - PERMANENT CONTROL POINT  
R - RADIAL LINE